

# Transferring files to pc00.cs.siu.edu

---

The current supported clients for transferring files to pc00.cs.siu.edu over SFTP with two-factor authentication:

WinSCP (Windows), Filezilla (Windows, Linux, MacOS), scp

## Guide for Filezilla

---

### Mageia 8

[https://madb.mageia.org/package/show/name/filezilla/arch/x86\\_64](https://madb.mageia.org/package/show/name/filezilla/arch/x86_64)

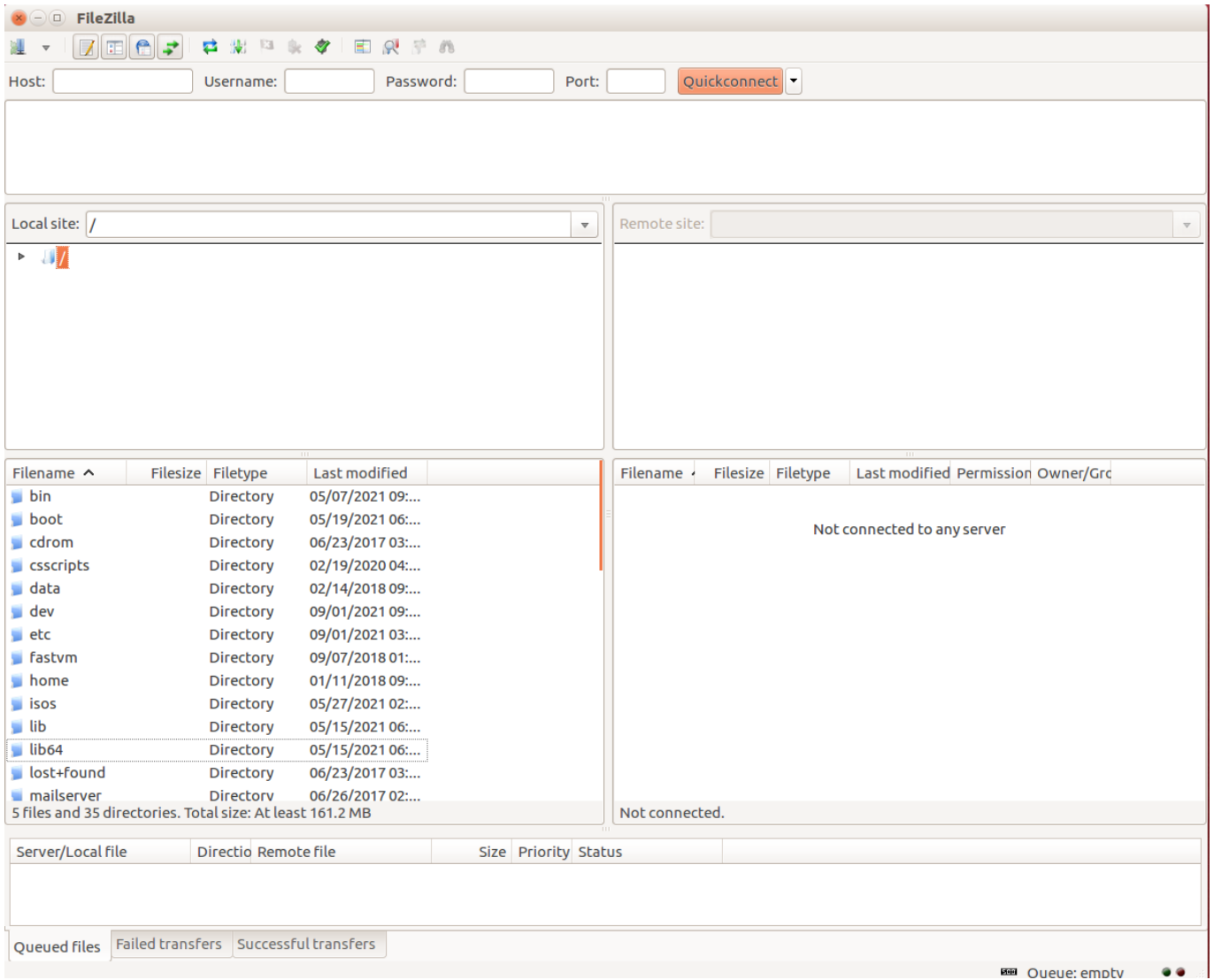
### Ubuntu 20.04

```
$ sudo apt-get install filezilla
```

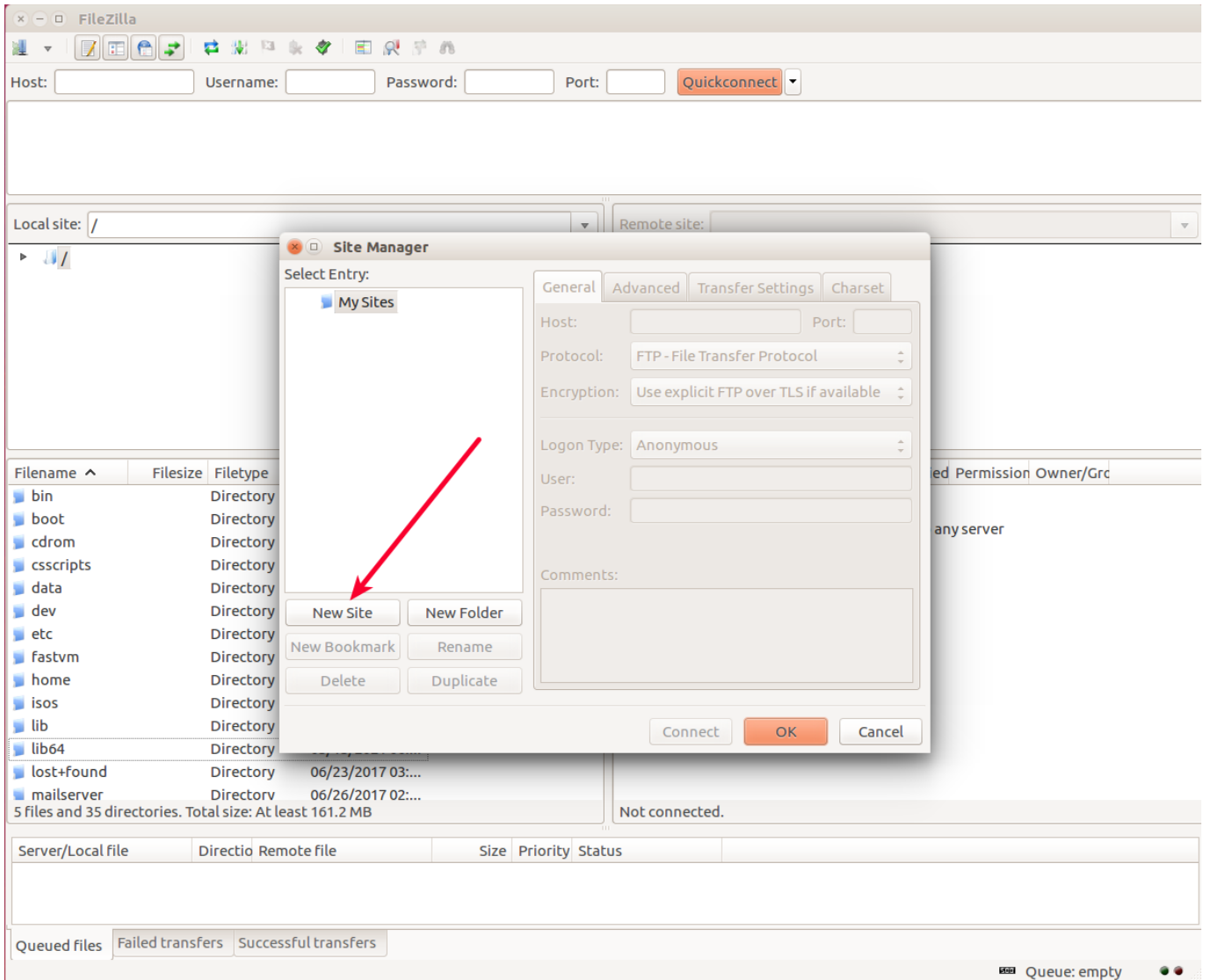
### Redhat / Rocky Linux 8

```
$ dnf install epel-release -y  
$ dnf install filezilla -y
```

Launch Filezilla

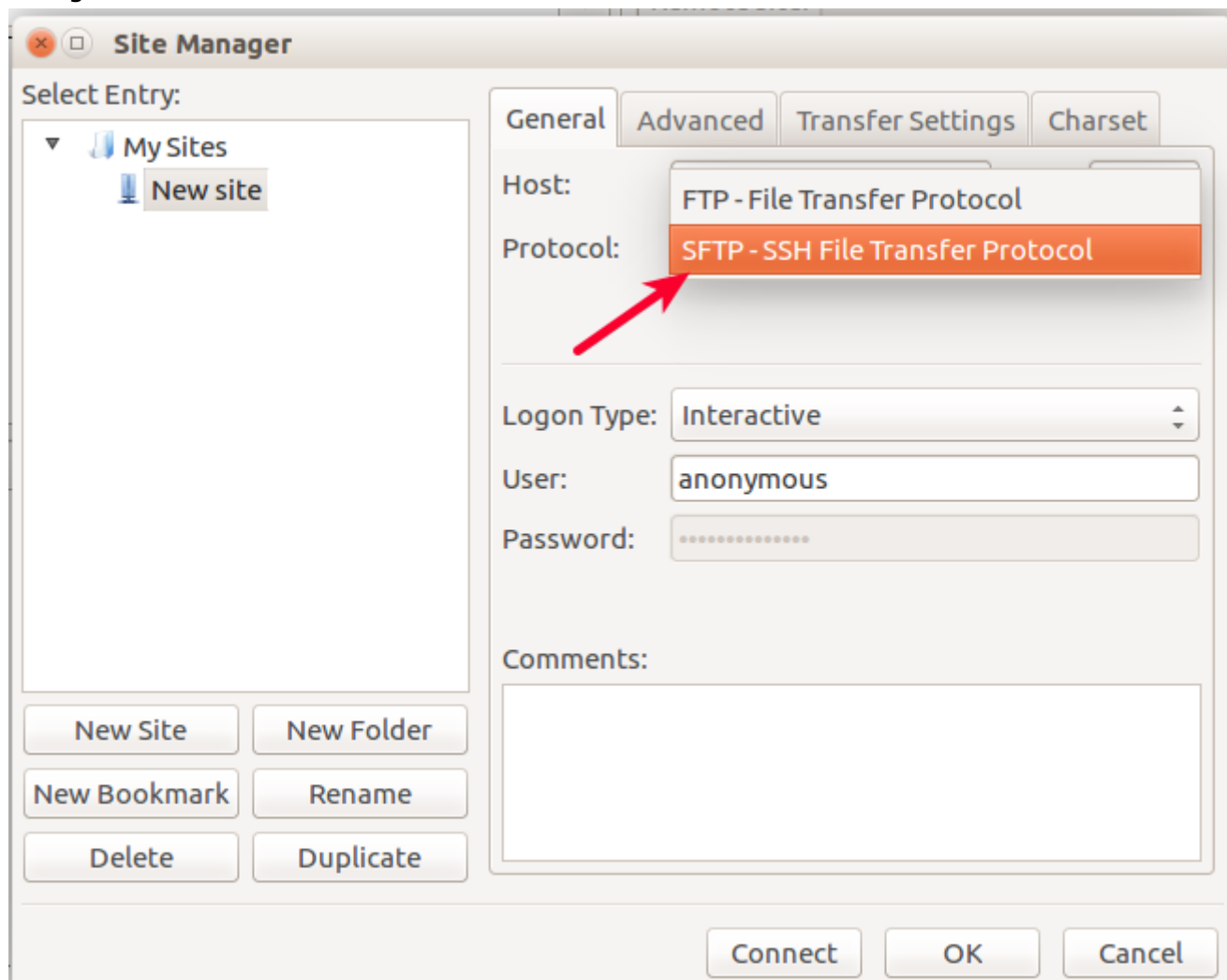


Click, File -> Site Manager

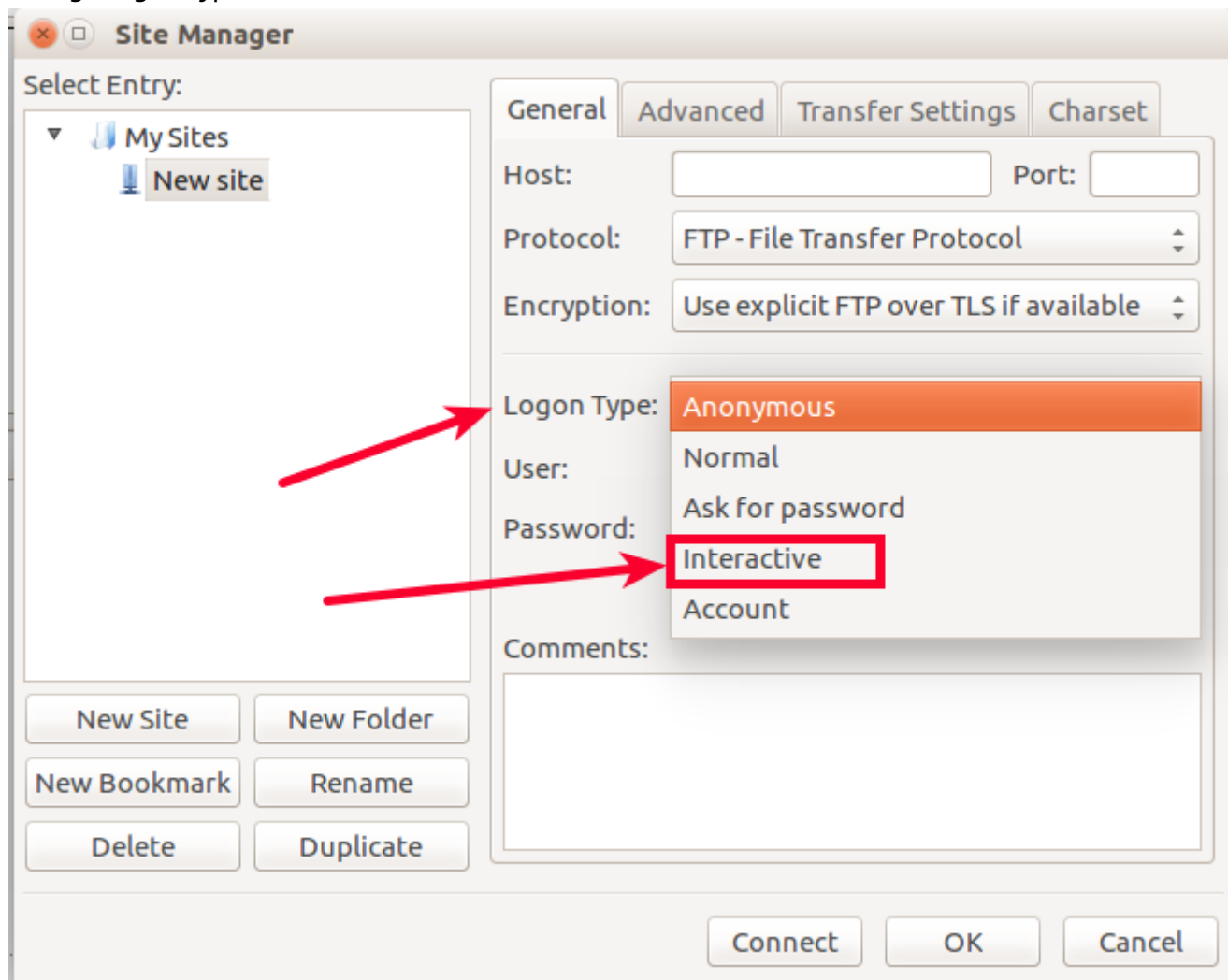


Click New Site

Change Protocol to "SFTP - SSH File Transfer Protocol"



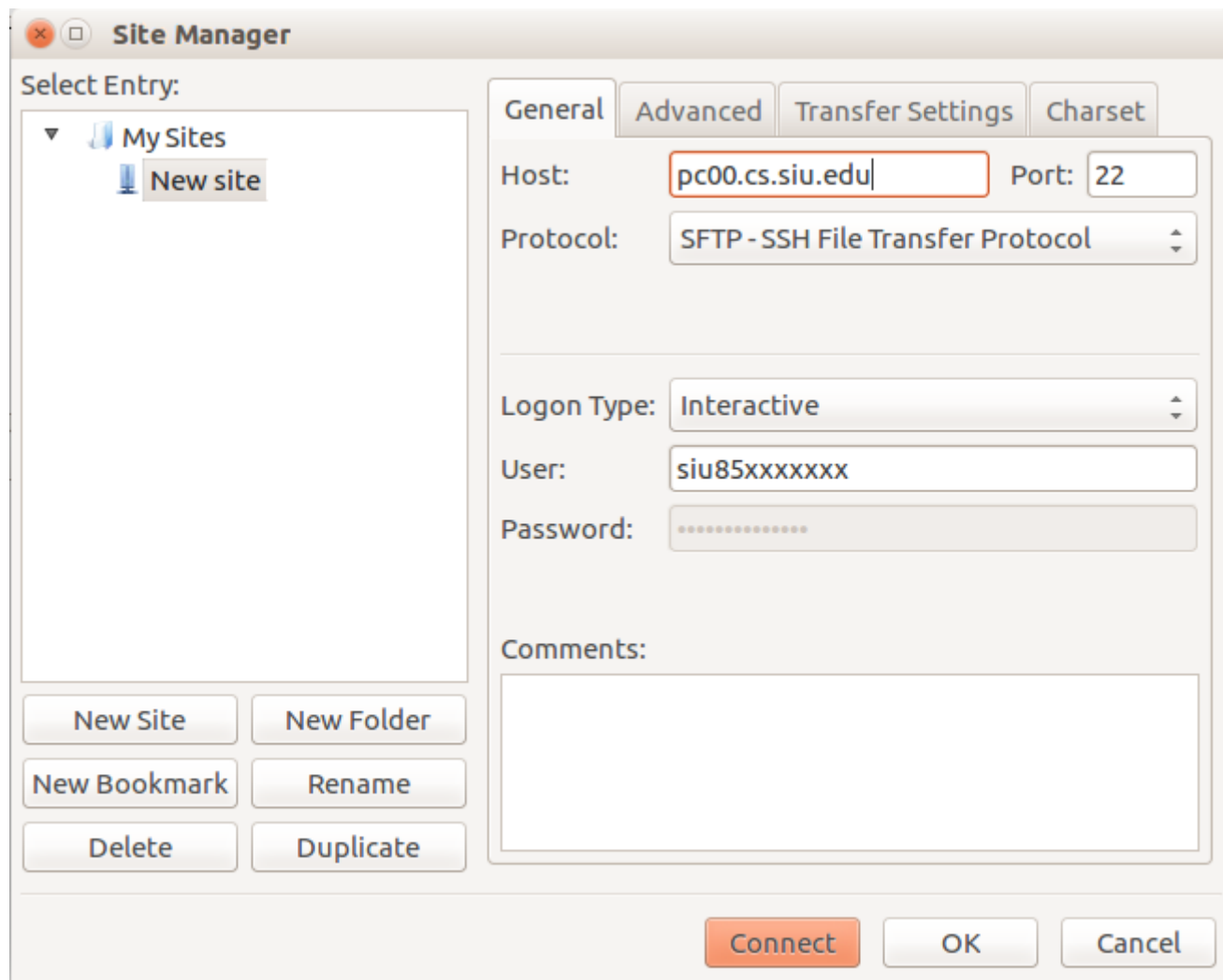
## Change Logon Type to Interactive



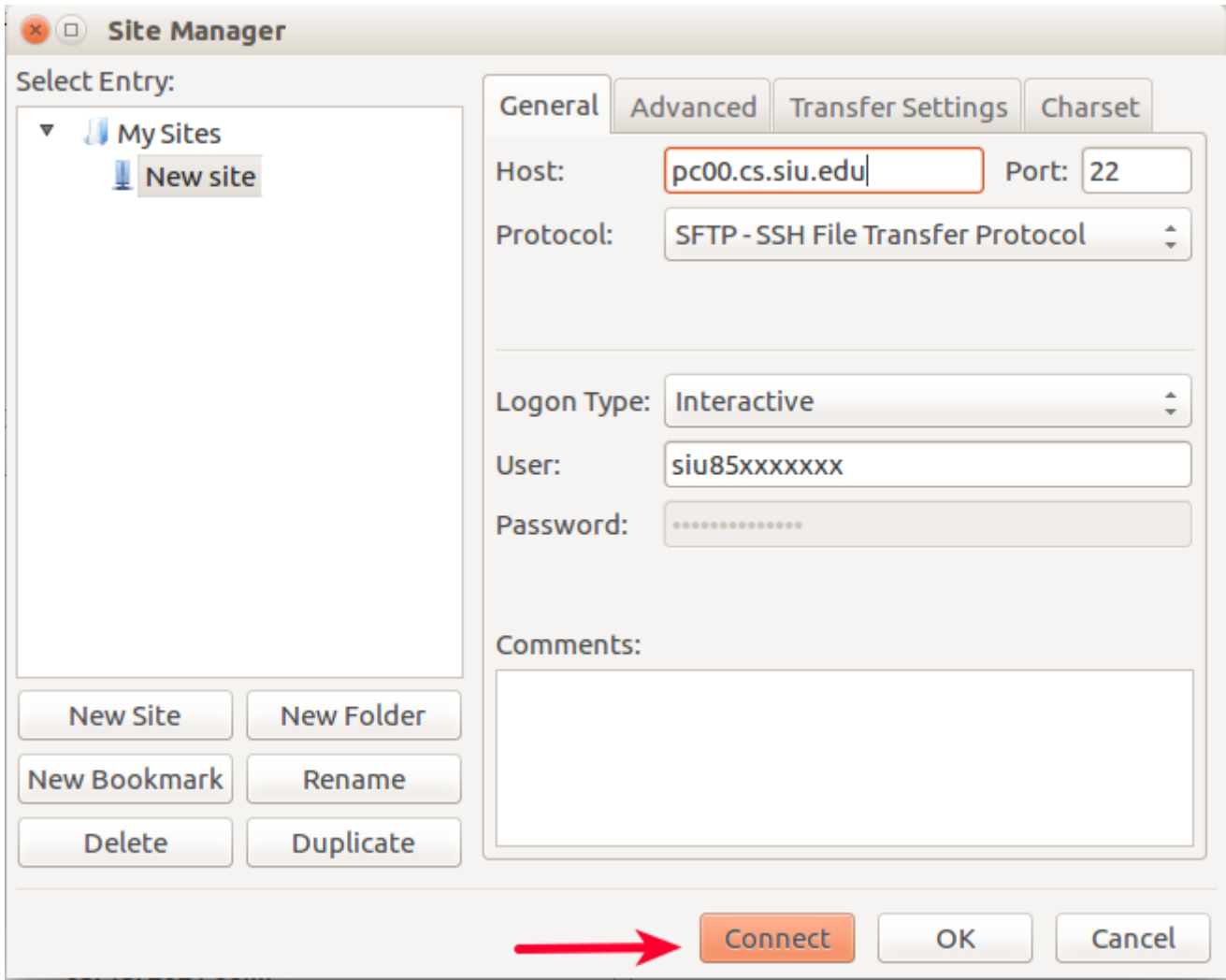
Type the following into the following fields:

Host: pc00.cs.siu.edu Port: 22

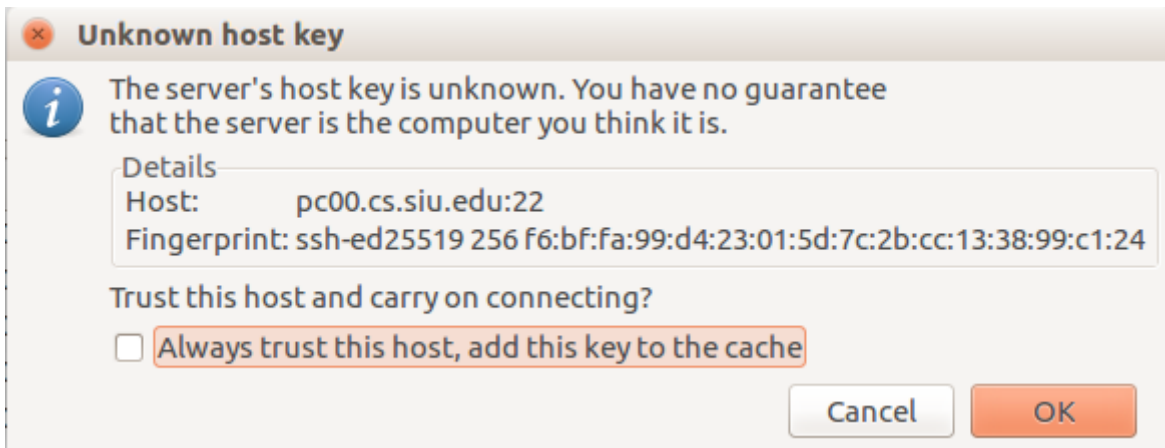
User: (Your SIU Dawg Tag) siu85xxxxxxx Password: Leave unfilled

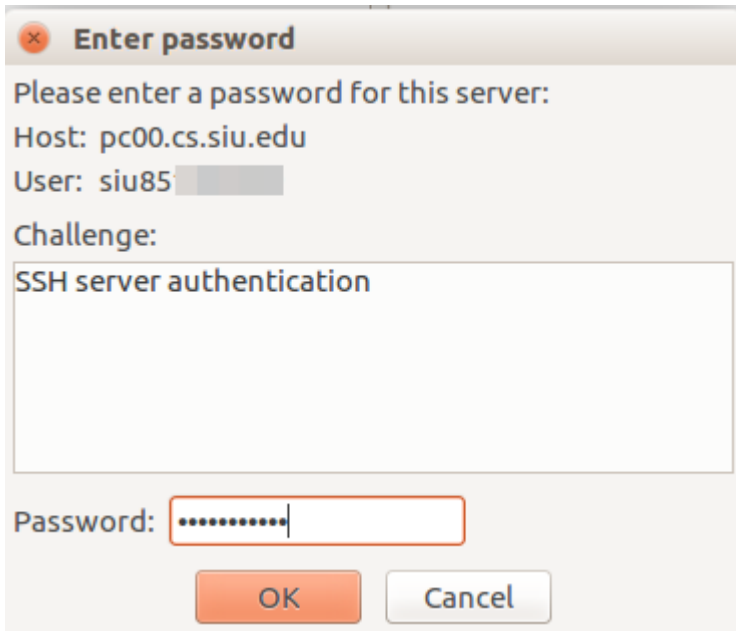


Select Connect



Trust the host key highlighted in the following screenshot:





**Enter password**

Please enter a password for this server:  
Host: pc00.cs.siu.edu  
User: siu85

Challenge:  
SSH server authentication

Password:

Input your user password



**Enter password**

Please enter a password for this server:  
Host: pc00.cs.siu.edu  
User: siu85

Challenge:  
SSH server authentication  
Duo two-factor login for siu85 Enter a passcode or select one of the following options: 1. Duo Push to XXX-XXX-0 2. Phone call to XXX-XXX-0 3. SMS passcodes to XXX-XXX-0 (next code starts with: 1) Passcode or option (1-3):

Password:

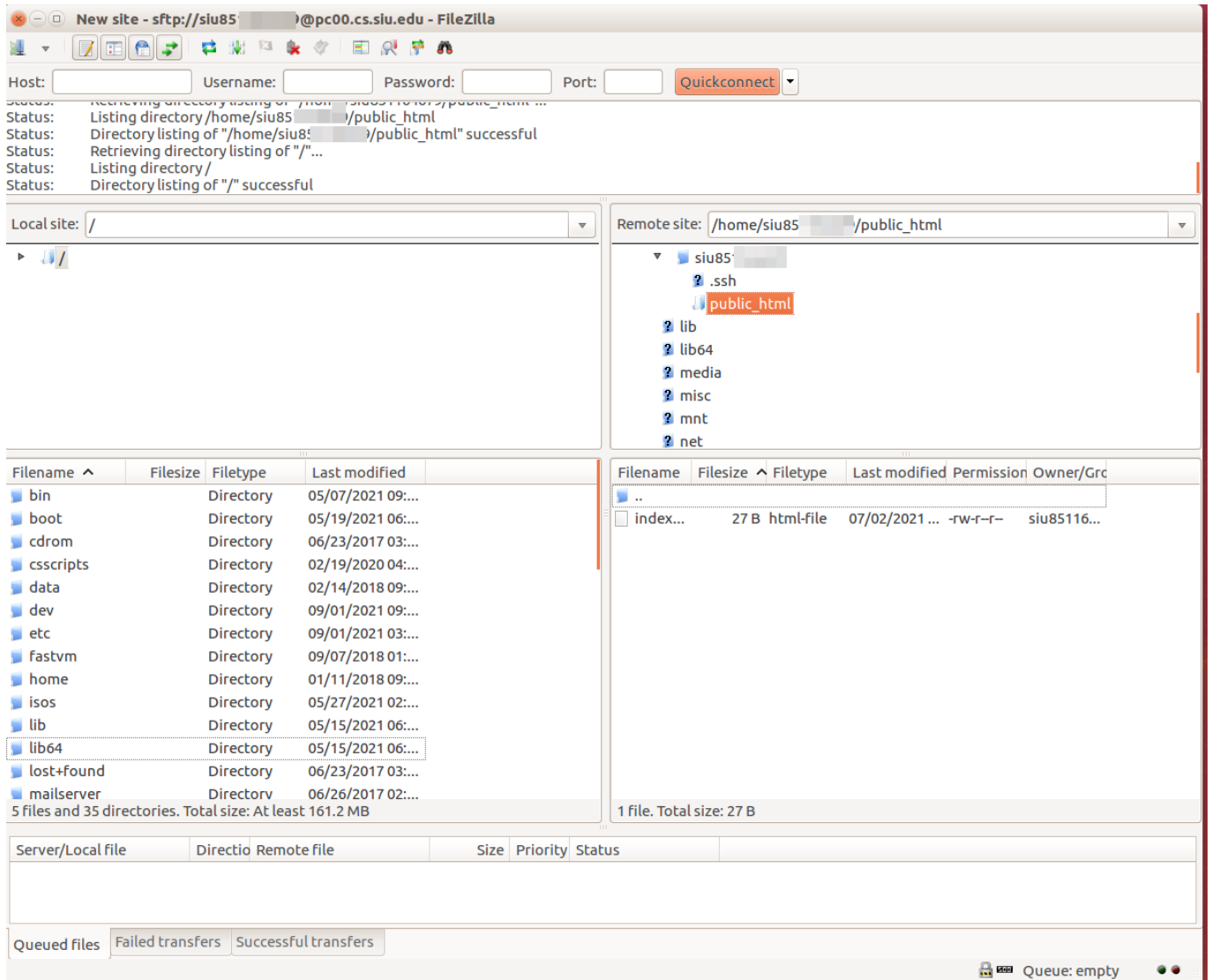
Select 1 for a Duo Push notification

Other options:

1. Duo Push to XXX-XXX-0XXX
2. Phone call to XXX-XXX-0XXX
3. SMS passcodes to XXX-XXX-0XXX (next code starts with: 1)

Finish your two-factor authentication on your device.





You should now be connected